

Dual Enrollment Application Demo & Webinar



California
Community
Colleges

April 10, 2025 12:00pm

Please note: This meeting is being recorded for the purpose of transcription.

Why a Dual Enrollment Application?

Because you told us to!

- Requests from multiple colleges & districts since 2021
- Response to Vision 2030 Goals
 - Finding New Pathways for Future Learners
 - Continue what works, Fix what doesn't, Create what is missing

“The system is...meeting or exceeding its Vision 2030 targets among [special] groups it focuses on. For example, the number of students enrolling via dual enrollment increased by almost 22% between 2022 and 2023.”

A Streamlined Path for Future Learners

Dual Enrollment students get lost in the current standard application

- Select the wrong option from a long list
- Guess at answers to questions that don't apply to them
- Why am I being asked this question?

A better application experience for these students will...

- Guide them to the right options so that they don't miss an opportunity for a head start on their educational and career goals
- Give them confidence that they CAN succeed at college (even before they start classes)
- Encourage them to continue at their CCC college after high-school graduation

“Our students don't have the time to learn how to navigate needlessly complicated systems that shut them out even before they get started” ~Chancellor Christian, July 2023.”

The Student Success Suite 2.0 Application Goal



Provide an innovative student-centered approach to onboarding while...

- Future-proofing the system with modular architecture
- Streamlining the user experience
- Addressing friction points
- Reducing unintended impacts on underrepresented students

The New Dual Enrollment Application Does All This!

Student Centered and Student Reviewed



No more “one size fits all” application

- Tailored applications only ask questions relevant to the student
- Remove redundant questions
- Accessibility built in and reviewed by experts
- More languages!!



The New SSS 2.0 Architecture

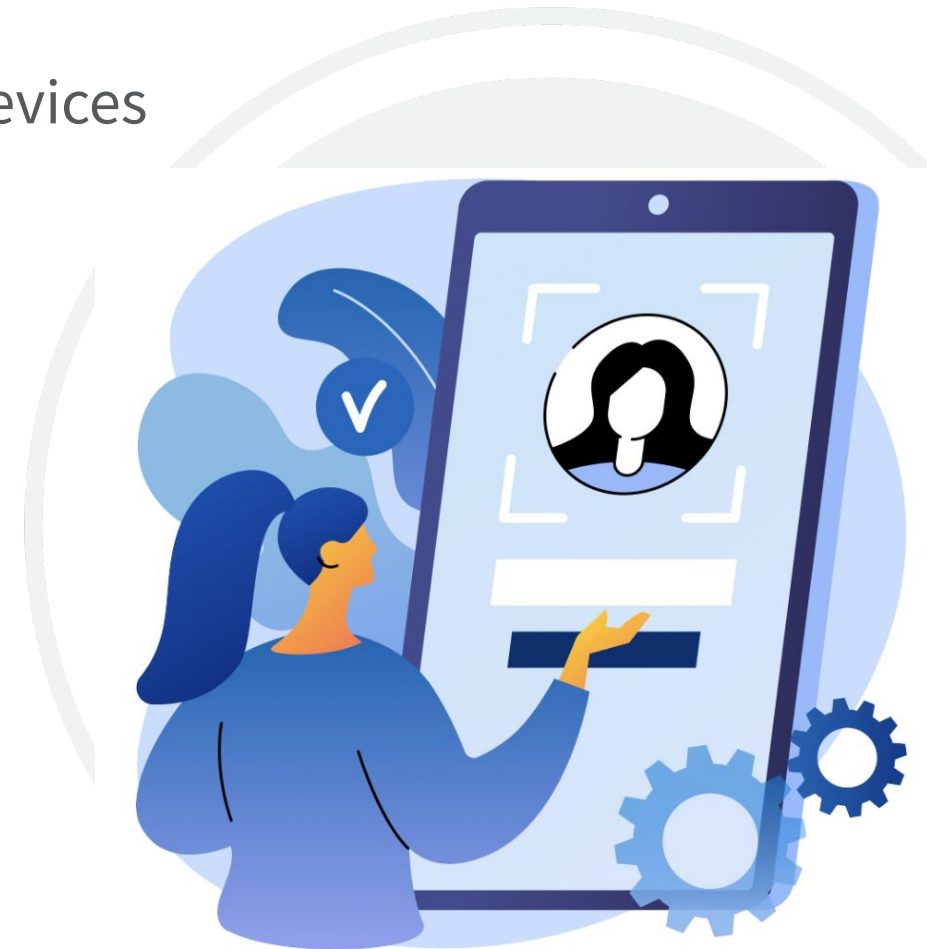
A cloud-native, modern technology stack and microservices-based platform

- Mobile-First User Interface Design
- Highly Configurable - Streamlined Business Logic
- Robust, transparent system operations
- Enhanced Data Delivery Mechanisms
- Enhanced Analytics Platform with User-Friendly Analytical Tools

Dual Enrollment Application Runs on SSS 2.0 Architecture

Modern Interface Design

- Mobile-first design for better display on mobile devices
- Simplified Language
- Better performance
 - Remove server-side rendering
 - Blend transactional data with static content
- Enhanced security
 - Narrowed “attack vector”
 - Rapid development
 - configuration vs code
 - code changes use code libraries
- Easy to Internationalize and add new languages



Demo



End-to-end Dual Enrollment application workflow *in 10 languages*

- English
- Spanish
- Tagalog
- Simplified Chinese
- Traditional Chinese
- Vietnamese
- Korean
- Hindi
- Armenian
- Russian



How are We Doing This?

- Default values for questions where only one answer applies to dual enrolled students

Stops selection of incorrect options that lead to enrollment delays

- Elimination of sections & questions that do not apply to these students
- Dual Enrollment Data Elements Details: [Dual Enrollment Data Elements](#)
- Access the proposed dual enrollment workflow diagram below

[Dual Enrollment Workflow Diagram](#)

Questions & Fields Comparison

	Current Standard (Domestic) Flow	Current Dual Enrollment Flow	SSS 2.0 Dual Enrollment Application
Total Data Fields	237	233	108*
Application Question Fields	127 81 - Required if displayed 38 - Optional questions	123 75 - Required if displayed 38 - Optional questions	45
Account Question Fields	21 15 - Required if displayed 6 - Optional questions	21 15 - Required if displayed 6 - Optional questions	25 17 - Required if displayed 8 - Optional questions
System-generated Fields	89	89	38
College-Configured	17	17	8
Residency Calculated Fields	37	37	0
Post-Submission Sys Fields	33	33	15
Supplemental Fields	10	10	0

Steps to the SSS 2.0 Application

Activities Across All Steps

- Input from the field
- Student feedback & testing
- Pilot User Acceptance Testing

Step 1, 2022: **Done!!**

New Account System
Zero Downtime Deployments

Step 2, 23-24: **Done!!**

Start New Apply Architecture
New UX Designs & Feedback
Phase 1 Demo & ID.me Integration
Beta Analytics & Reporting Services

Step 3: Done in Spring 2025!

Dual Enrollment Application
Extended Pilot & Feedback
Student Profile Changes

Step 4

Student Engagement
Reporting & Analytics

Next Steps: Consensus & CCCC CO Approval



Pilot Goal: Consensus from testers that the application includes minimally required questions & features and is ready for production.

In Progress: Collaboration with CCCC CO on proposal to remove unnecessary fields/questions:

- Noncredit application is our model: we've done this before!
AB3031: https://calmatters.digitaldemocracy.org/bills/ca_201720180ab3101
- Submitted proposal with supporting documents & statistics
- Engaging with CCCC CO Dual Enrollment team, MIS staff, Research team, Legal Counsel, Government Relations, and others as needed to gain approval

Phase 1 Pilot

Goal: Refine the end-to-end application workflow

Scope: Collaborative testing with small group of colleges and students

- What works and what doesn't work?
- What do students like and what do they want changed?
- What reports & student engagement options are needed to support dual enrollment student onboarding?

Phase 1 pilot timeline: mid-April to mid-June 2025

Thank You For Your Support!

Colleges & Districts testing in Phase 1:

- Cabrillo
- Cuesta
- Bakersfield
- Butte
- Cerro Coso
- Santa Barbara
- City College of San Francisco
- Fullerton
- Mira Costa
- Riverside
- Santiago Canyon
- Shasta
- State Center CCD
- Los Rios CCD
- LACCD
- San Diego CCD

Phase 2: Systemwide Open Pilot

Goal: Collaborative testing & feedback with all colleges

- Branded pilot sites for colleges
- Focus on accessibility

Recruiting students across the system for accessibility testing

- Student experience updates based on phase 1 feedback
 - Data Delivery via SuperGlue
-
- **Phase 2 pilot target timeline: July to September 2025**

Phase 3: User Acceptance Testing (UAT)

Goal: Pre-production testing with volunteer students and staff to determine readiness for go-live

- Last phase before production
 - Documentation, Implementation plan, Training, Systemwide Notices
 - Production GO/NO with system stakeholders
-
- Phase 3 UAT target timeline: October to December 2025

Next Steps: Student Engagement



New Student Engagement System!

- Define minimally-required student engagement messages/tasks

Next Steps: Reporting Requirements



New Reporting System!

- Determine minimally-required reports

Most used reports in CCCApply Report Center:

- Full Application Lookup Report–**Done!**
- Fraud reports (need analysis on these to build report templates)
- Foster Youth

Next Steps: Application Configuration

New Application Configuration System!

- Terms, majors, etc
 - Majors not used for Dual Enrollment application, but will be needed for other SSS 2.0 application types



Enabling Services & Support Resources

- Release alerts and peer support for products - Visit www.ccctechnology.info
- Production issues - Create a staff support ticket by emailing us at staffsupportccctc@openccc.zendesk.com.
- To adopt or upgrade a product or schedule a training session: cems@ccctechcenter.org



<https://ccctechcenter.org/resources/ess>

Thank you!

- Jane Linder, *Student Success Suite Director*
jlinder@ccctechcenter.org
- Mike Caruso, *Student Success Suite Product Owner*
mcaruso@ccctechcenter.org
- Patty Donohue, *CCCApplly Product Manager*
pdonohue@ccctechcenter.org
- College Experience Managers: cems@ccctechcenter.org
Monica Zalaket, Beth Knowles, Ramya Hari